

MCF 3M Opener

Simplify

i)  $\frac{3^2 \cdot (2^3)^2}{3(2)^2}$

ii)  $3^3 \div 3^{-2}$

iii)  $9^{\frac{1}{2}}$

$16^{\frac{3}{4}}$

Apr 28-10:10 AM

MCF 3M Opener

Simplify

i)  $\frac{3^2 \cdot (2^3)^2}{3(2)^2}$

ii)  $3^3 \div 3^{-2}$

$\frac{3^2 \cdot 2^6}{3 \cdot 2^2}$   
 $= 3^1 \cdot 2^4$

$3^{3 - -2}$   
 $3^5$

$9^{\frac{1}{2}}$   
 $\sqrt[2]{9}$   
 $3$   
 $8^{-2}$   
 $\frac{1}{8^2}$   
 $\frac{1}{64}$

$(\sqrt[4]{16})^3$   
 $2^2$   
 $3^{.5}$   
 $3^{\frac{5}{10}}$   
 $3^{\frac{1}{2}}$   
 $\sqrt[2]{3}$

$\sqrt[2]{32}$   
 $(2)^2$   
 $4$

Apr 28-10:10 AM

Work Sheet Transformations

$D = \{x \in R\}$   
 $R = \{y \in R | y > 0\}$

$y = 2^x$   
 $f(x) = 2^x$

Key Points to graphing

exponential growth  
 $b/c + b > 1$

horizontal asymptote  
 $y = 0$   
 $y_{int} = +1$

$y = 2^x$   
 $x \mid y$   
 $2 \mid 2$

Apr 28-9:43 AM

Work Sheet Transformations

$f(x) = a(b)^{x-c} + d$   
 $y = 3^x$

Key Points to graphing

$b = 3$

Apr 28-9:43 AM

Work Sheet Transformations

$f(x) = a(b)^{x-c} + d$   
 $y = 3^x$

Key Points to graphing

$b = 3$

Apr 28-9:43 AM

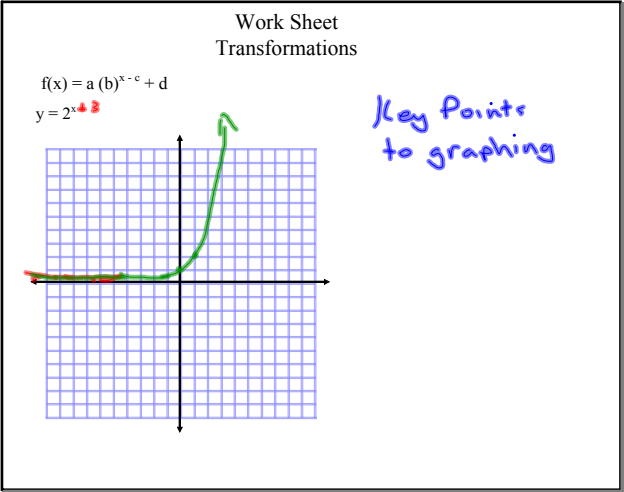
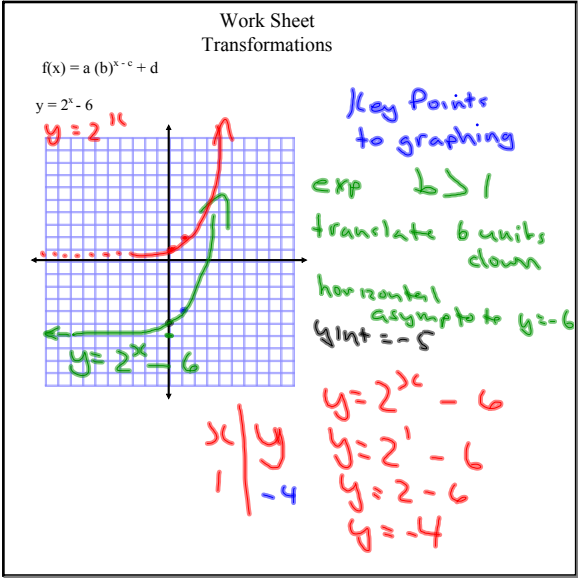
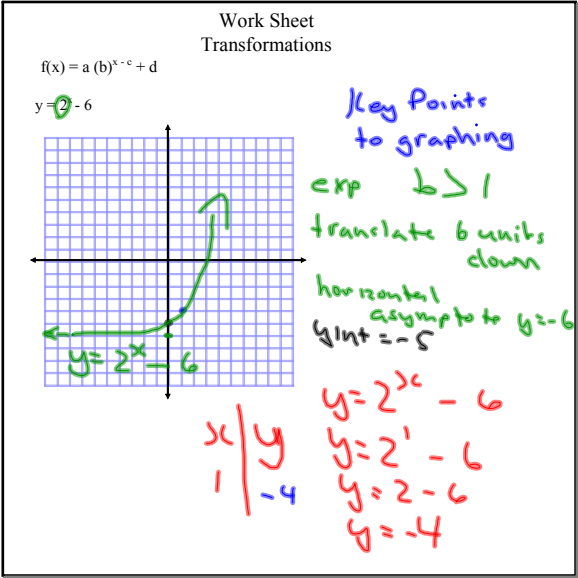
Work Sheet Transformations

$f(x) = a(b)^{x-c} + d$   
 $y = 1/3^x$

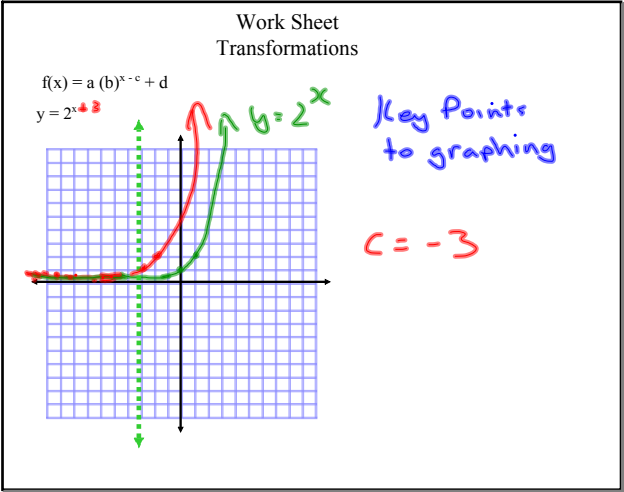
Key Points to graphing

$b = 1/3$

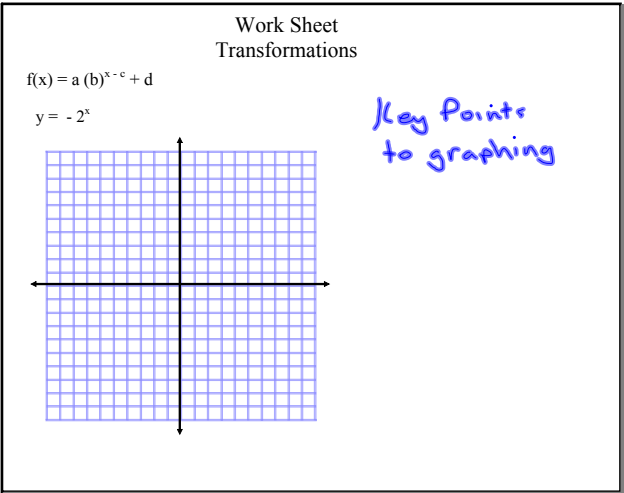
Apr 28-9:43 AM



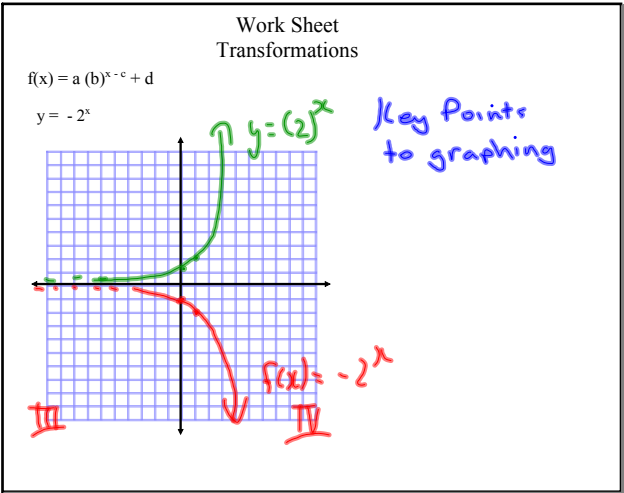
Apr 28-9:43 AM



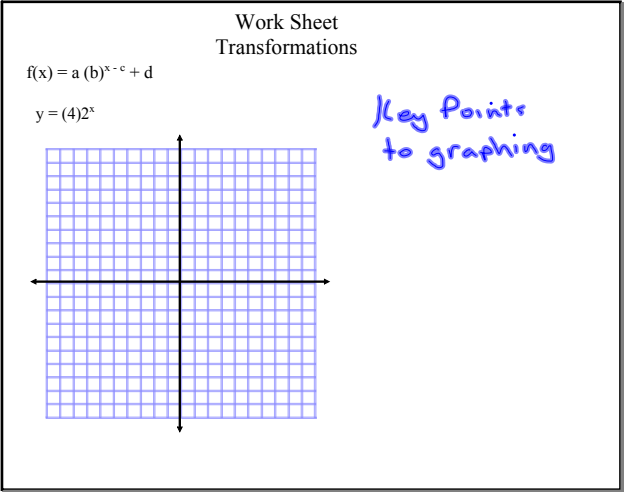
Apr 28-9:43 AM



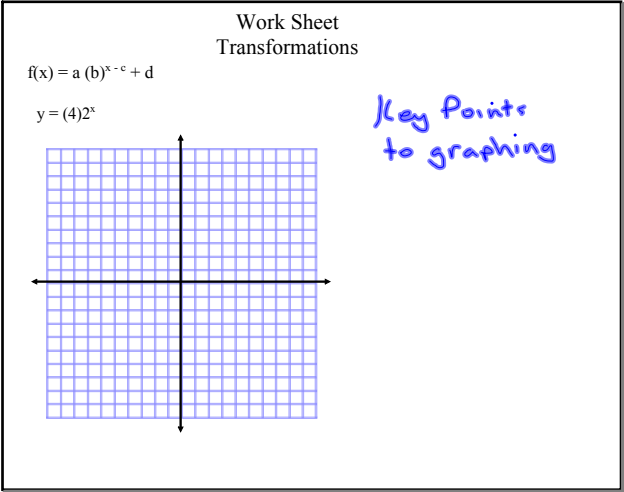
Apr 28-9:43 AM



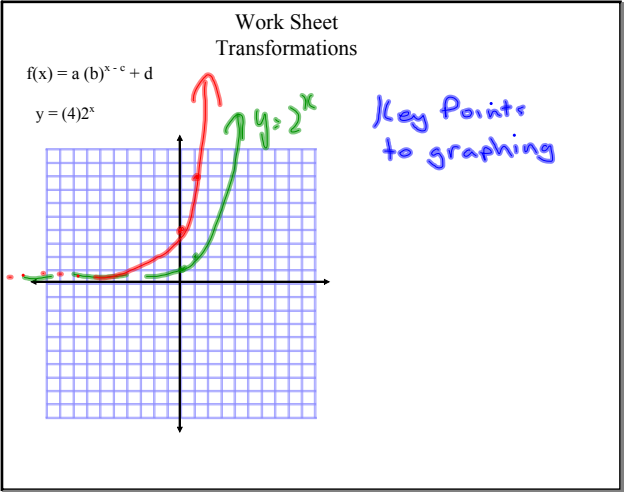
Apr 28-9:43 AM



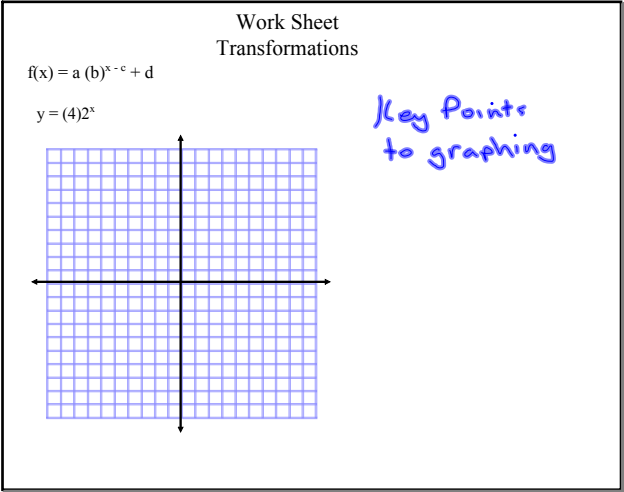
Apr 28-9:43 AM



Apr 28-9:43 AM



Apr 28-9:43 AM



Apr 28-9:43 AM

p. 423-424  
q. 1-3

Dec 5-7:26 AM